

Old Station Mews, Eaglescliffe



£117,500

IH INGLEBY HOMES





A lovely apartment sitting on the ground floor of this very desirable development, situated just a stroll away from Yarm High Street, with its shopping amenities, bistro's, bars and restaurants.

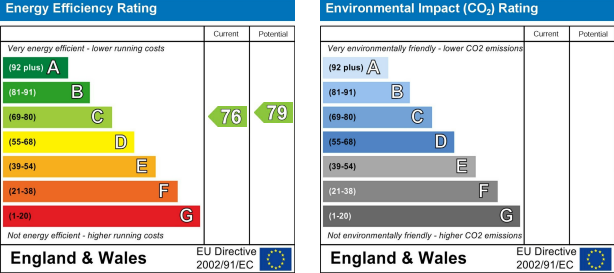
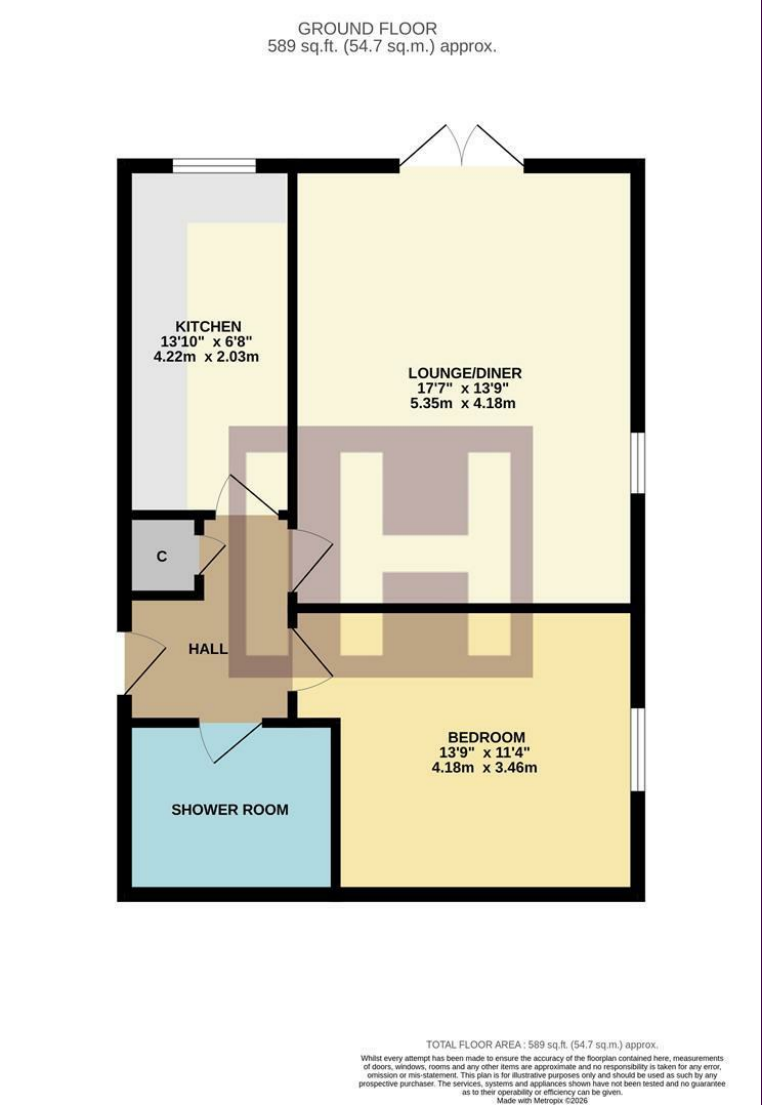
Enjoying a secluded spot, benefiting from electric security gates, with allocated owner parking bays, and additional visitor spaces.

The ground floor position may prove an ideal alternative to a bungalow, with 'French' doors opening of the living room allowing access, additional to the well-maintained communal entrance. Warmed by a recently replaced boiler (2025), the apartment further benefits from quality floorings, fresh decor and an impressive refitted shower room.



Briefly, the accommodation comprises an entrance hall with storage cupboard, large lounge/diner, separate fitted kitchen with integrated fridge/freezer, and a replaced oven/hob, impressive modern shower room, and generous double bedroom. No forward chain.

The Layout



The Location



Council Tax Band:
Tenure:

Leasehold



- Impressive ground floor apartment, 'turn-key' ready
- Lovely position just a stroll in to 'Yarm High Street
- Secure gated access and intercom system
- Generous lounge, separate kitchen with appliances
- Impressive refitted shower room and double bedroom
- All lease/service charges have already been paid in full for 2026